

The Role of Economic Factors and Economic Support in Preventing and Escaping From Intimate Partner Violence (IPV)

Jennifer L. Matjasko, Ph.D.
Behavioral Scientist
Centers for Disease Control and Prevention

OPRE Webinar
October 29th, 2014



U.S. Department of Health and Human Services
Centers for Disease Control and Prevention

Disclaimer, disclosure, acknowledgements

- ❑ The findings and conclusions in this presentation are those of the author and do not necessarily represent the official position of the Centers for Disease Control and Prevention
- ❑ The following personal financial relationships with commercial interests relevant to this presentation existed during the past 12 months:
No relationships to disclose
- ❑ Many thanks to my CDC colleagues at the Division of Violence Prevention: Phyllis Holditch Niolon and Linda Anne Valle*

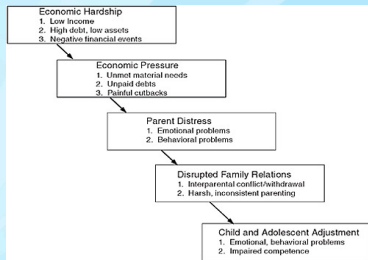
Matjasko, J. L., Niolon, P. H., & Valle, L. A. (2013). The role of economic factors and economic support in preventing and escaping from intimate partner violence. *Journal of Policy Analysis and Management*, 32, 122-128.

Overview

- ❑ IPV Typologies
- ❑ Risk and protective factors for IPV by Typology (highlighting role of economic factors)
- ❑ Evidence base for IPV prevention programs and policies
- ❑ The role of economic support in IPV prevention
- ❑ CDC's Economic Development Initiative
- ❑ Lingering questions

Economic Factors and IPV Typologies: Situational Couple Violence

Financial Stress and Conflict Escalation: Family Stress Model



Conger & Conger (2008).

Other Risk Factors

- ❑ Intimate Terrorism
- ❑ Situational Couple Violence

→ Implication: Both typologies carry serious risks for injury and require a public health approach to address all forms of IPV

PUBLIC HEALTH APPROACH TO ADDRESS IPV

A Public Health Approach to IPV

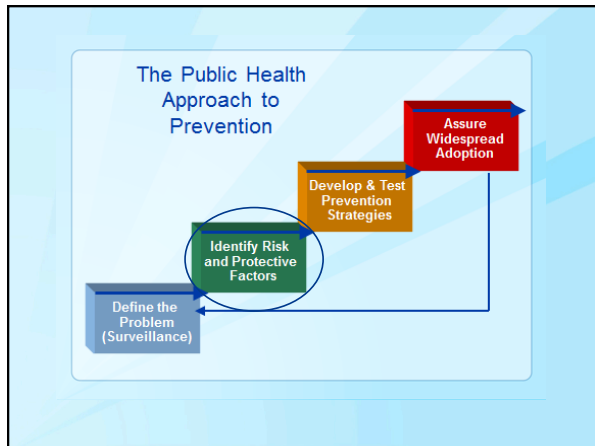
- Focus is on prevention
- Comprehensive
 - Focused on reducing risk, strengthening protective factors
 - Multisector approach
- Prevention strategies based on strong evidence
- **Apply science to reduce IPV-related injury and mortality**

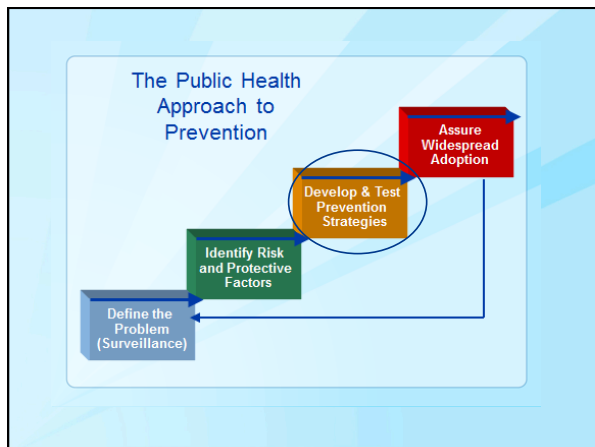
The Public Health Approach to Prevention



The Public Health Approach to Prevention





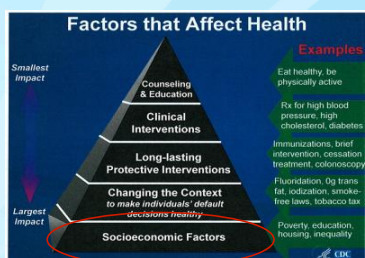


**THE STATE OF THE EVIDENCE
FOR IPV PREVENTION**

The State of the Evidence for IPV Programs and Policies

- ❑ **Dyadic Interventions**
 - E.g., PREP
- ❑ **IPV Screening**
 - E.g., screening in healthcare settings
- ❑ **Coordinated Community Response (CCR)**
- ❑ **Mandated programs for male batterers**
 - E.g., Domestic Abuse Intervention Project (i.e., Duluth Model)

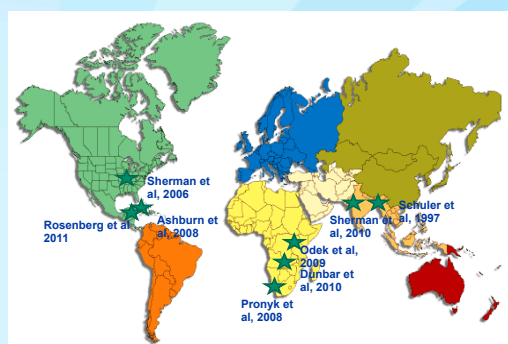
The Potential Role for Economic Support in IPV Prevention



State of the Evidence: Economic Support and IPV Prevention

- ❑ **Economic Programs and Policies and IPV Research**
 - TANF Sanctions and Time Limits
 - Unemployment Benefits, etc.
- ❑ **LIMITED Evidence**
- ❑ **Microfinance Programs: Rigorous evidence of effectiveness**
 - Example: Grameen Bank, created in Bangladesh in 1976 by Nobel Peace Prize Winner Muhammad Yunus
 - The practice of providing financial resources to individuals in order to build capital (e.g., small loans for entrepreneurship activities, individual development accounts, microcredit)

Microfinance and Health



CDC Efforts in Addressing Economic Factors

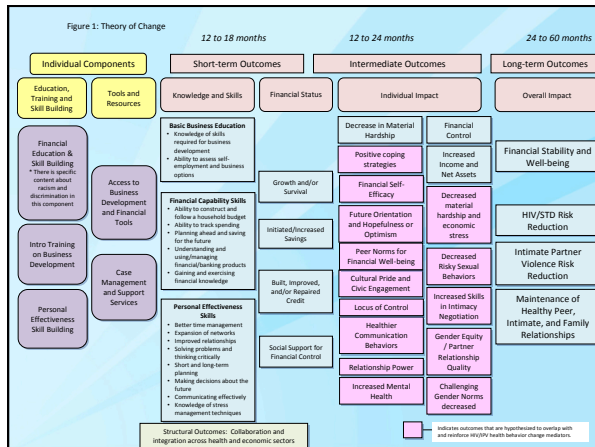
- **Economic Development Initiative (EDI), a cross-cutting, cross-Division collaboration**
 - Division of Violence Prevention
 - Division of HIV/AIDS Prevention
 - Division of STD Prevention
 - Division of Diabetes Translation

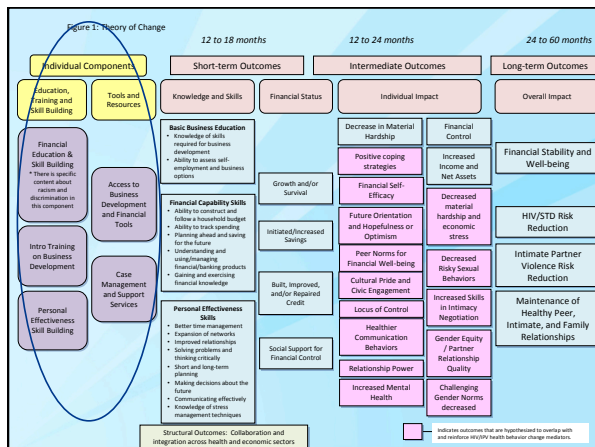
Key Intervention Development Activities

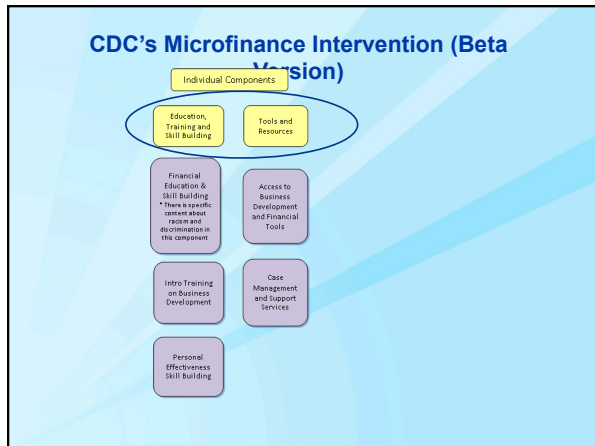
- **Four groups informed several components of the intervention development process:**
 - Core Study Group (Seven experts in MF research and intervention development, IPV research, HIV research, community expert)
 - National Consultation Meeting (A larger body of national experts)
 - Local Advisory Groups (based in 3 geographically diverse urban areas with relatively high HIV/STD rates: Oakland, CA; New Orleans, LA; Washington, DC)
 - Literature Reviews (Extensive reviews)
- **Key products that will be informed by all four groups:**
 - Theory of Change/Logic Model Development
 - Intervention Manual

Key Themes from Experts and Community Stakeholders

- 1) Addressing social determinants of health is critical and needed
- 2) Requires a needed collaboration between the health and financial sectors
 - There are existing organizations that are ready to implement the MF Intervention (e.g., health clinic in DC)
- 3) The need to address racism within the intervention
- 4) Build in safety planning/resources for those who may be experiencing IT or SCV
- 5) Foster community trust







**Future Directions:
CDC's Economic Development Initiative**

- Continue to build and strengthen partnerships inside and outside of the CDC
- Refine curriculum/components testing
- Individual-level implementation and randomized evaluation of the MF intervention
- Community-level evaluation of the MF intervention

**Future Directions:
CDC's Economic Development Initiative**

- Continue to build and strengthen partnerships inside and outside of the CDC
- Refine curriculum/components testing
- Individual-level implementation and randomized evaluation of the MF intervention
- Community-level evaluation of the MF intervention


Lingering questions for the field...

- ❑ Replicate/confirm IPV Typologies
- ❑ The evidence for economic support and IPV prevention is promising but needs to be tested
- ❑ Build and understand the evidence base for IPV prevention accounting for typologies

Thank you!
Questions?

jmatjasko@cdc.gov

For more information please contact Centers for Disease Control and Prevention
1600 Clifton Road NE, Atlanta, GA 30333
Telephone: 1-800-CDC-INFO (232-4636)/TTY: 1-888-232-6348
E-mail: cdcinfo@cdc.gov Web: www.atsdr.cdc.gov

 U.S. Department of Health and Human Services
Centers for Disease Control and Prevention
