

# Youth Defined Prevention Strategies

Shay Upadhyay and Colleen Yeakle





# Welcome!

---

We're glad you're here.



# Shay Upadhyay



**Major:** Nonprofit Management and Leadership

**Certificate:** Political Activism and Civic Engagement

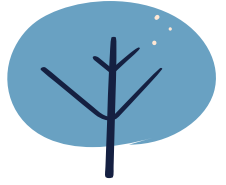
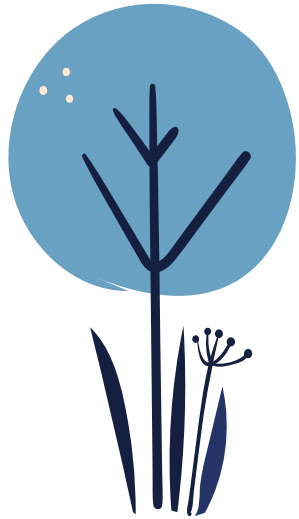
**Minors:** Social Welfare Advocacy, Leaders+Leadership, Urban Planning and Community Development

# Junior, Indiana University

- Joined ICADV Youth Council in 2016
- Youth Council President (2017-2018)
- Policy Advocacy workshop
- Collaboration with Jane Doe



Why should we ask young people about prevention?





# Aaron Nunes

Junior at Purdue University

"We want to equip the young people in our communities with the right resources to end the cycle of violence."

former member of the Monroe  
County Youth Council



# Erin Doyle

Junior at the University of Utah

“It is important for [young people] to understand the specific systems in place that contribute to cycles of violence in the community.”

former member of the Indiana  
Coalition Against Domestic Violence  
Youth Council





“Young people want to be engaged as world changers.”



# Skill Development

- Data Collection
- Data Analysis
- Legislative Advocacy trainings
- Public Policy Advocacy
- Marketing
- PSA development - storyboarding
- Blogging
- Conference presentations
- Radio interviews
- Youth Summit planning and facilitation
- Letters to the editor
- Letters to legislators







Why do we care about  
building safe, stable,  
nurturing communities?





# Nidhi Krishnan

Sophomore student at Washington University

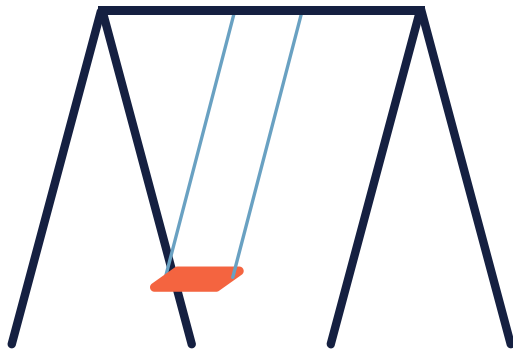
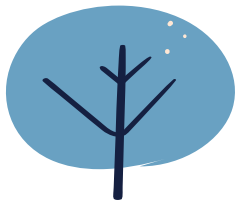
“Safe, stable, and nurturing communities are important in ensuring that no one falls through the cracks. We cannot just have safety and stability at the individual level; rather, when we have stable communities, we provide support structures for those who may need to rely on them.”

former member of the Monroe  
County Youth Council

# Safe, Stable and Nurturing Communities

- Promote optimal youth development—physically, socially and emotionally
- Promote resilience among individuals who have experiences of adversity
- Preventive of multiple forms of violence (Centers for Disease Control and Prevention, 2014)
- Preventive of adolescent substance use (National Institute on Drug Abuse, 2016)





## Your turn!

What comes to mind when you think of “safe,” “stable,” and “nurturing” communities?

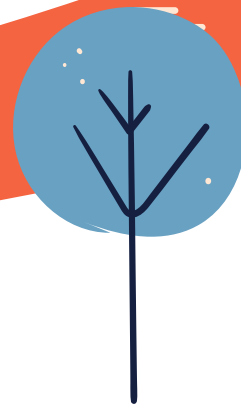




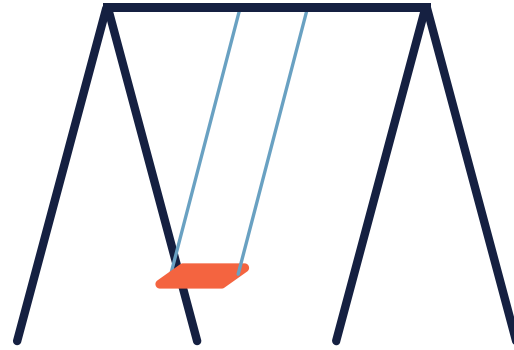
01

## Doing the Work

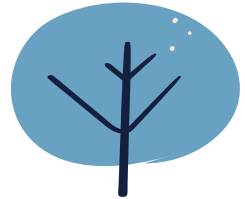
We collected data from four different youth councils in the State of Indiana to find out what makes students feel safe, nurtured, and stable.







- Council On Domestic Abuse (Terre Haute)
- Monroe County Youth Council (Bloomington)
- Indiana Coalition Against Domestic Violence Youth Council (Indianapolis)
- County-Wide Youth Council for Leadership and Engagement (Greencastle)



Church

# Stable

**Stable** is consistently positive, reliable, cozy, & tranquil.

**FRIENDS**  
Who are always there for you

**Accessible mental health RESOURCES**

**LOVE**

**Strong support systems**

*Handwritten note:* I'm not alone

**Able Body Stable Mind**

**Stable**

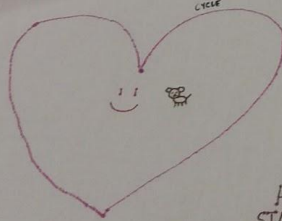
**HEALTHY**

**BALANCED**

**close connections with others**

**I have healthy relationships**

**Consistency makes me feel stable**



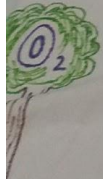
**HORSE STABLE?**

**Um... no?**

**Love**

**LOVE**

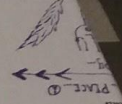
**LOVE**



**Connections**

**Relationships**

**Routine**



**LOVE**



# Nurturing

Affection

helping me grow & become the BEST version of myself.  
relationships, organizations, communities

Love  
Nurturing  
relationships  
great bring  
up  
Not for  
you own.

People care about what I do and what happens to me

ICADV  
Love

Love

THE Quicker THE HEALING PROCESS THE Better

CREATIVITY  
Resources to be

Priority

Putting others before yourself!

hike

Valuing  
Supporting  
the change

Love

Love

Leadership  
Councils

ORMA  
SA  
TTY

THOSE WHO CARE  
BEST YOU CAN BE

not  
bring  
up

Not for  
you own.

Love  
Nurturing  
relationships  
great bring  
up  
Not for  
you own.

Love  
Nurturing  
relationships  
great bring  
up  
Not for  
you own.

Love  
Nurturing  
relationships  
great bring  
up  
Not for  
you own.

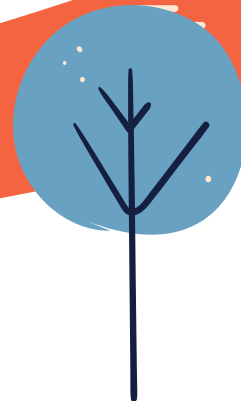
Love



02

## Collecting the Data

ICADV staff and partners coded the data into different “areas of need” based on the responses we received.





# “Safe”

MCYC	Bloomington, Indiana	12/1/2016	"good neighborhood"		C--environment:	HR	C	c	c
MCYC	Bloomington, Indiana	12/1/2016	"legislation"		C, S--SDOH: public	OS	S	s/c	S
MCYC	Bloomington, Indiana	12/1/2016	"Healthcare"		S--SDOH: health	H, RS	S	o	S
MCYC	Bloomington, Indiana	12/1/2016	"constant source of food"		C,S--SDOH: food	R	C/S	c	C
MCYC	Bloomington, Indiana	12/1/2016	"consideration for others"		R--kindness	R	R	r	r
MCYC	Bloomington, Indiana	12/1/2016	"kindness"		R--kindness	L	C/R	r	r
MCYC	Bloomington, Indiana	12/1/2016	"Being able to protect yourself/others"		O--security	P	R/C	c	O
MCYC	Bloomington, Indiana	12/1/2016	"security"		O--security	P	O/C/S	c	O
MCYC	Bloomington, Indiana	12/1/2016		Drawing: "\$\$"	S--SDOH: financial	RS	S	c	S

# “Stable”

CYCLE	Greencastle, In	8/26/2017	"close connections with		R: social	R, HR	R	r
CYCLE	Greencastle, In	8/26/2017	"healthy relationships		R: social	R, HR, AC	R	r
CYCLE	Greencastle, In	8/26/2017		Drawing: heart drawing with a :) and a dog inside	R: pets	RS, L	R	r
CYCLE	Greencastle, In	8/26/2017	"Able Body stable mind	Drawing: heart with a bunch of hearts inside of it;	C: SDOH:	L, H	I/R	i
CYCLE	Greencastle, In	8/26/2017	"Stable"	Drawing: "dad" on the left, "me" in the middle,	R: Family	OS, HR, R	R/C	r
CYCLE	Greencastle, In	8/26/2017	"ease... Peace..."	Drawing: peace symbol with arrows pointing to	O, C:	L	S	i...s
CYCLE	Greencastle, In	8/26/2017	"positively beautifully	Drawing: feather	O, C:	L, RS	C	i
CYCLE	Greencastle, In	8/26/2017	"comfortable"		?	L	R/C	c/i
CYCLE	Greencastle, In	8/26/2017		Drawing: a heartbeat with a heart on the end	?	L, H	I/R	r
CYCLE	Greencastle, In	8/26/2017	"Family)	Drawing: two people (one appears female and	R: Family	OS, HR, R	R	r
CYCLE	Greencastle, In	8/26/2017	"horse stable?"		? jokey stuff	?	UH? ENVI	?

# “Nurturing”

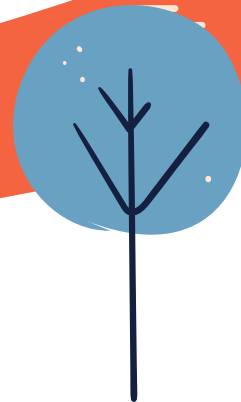
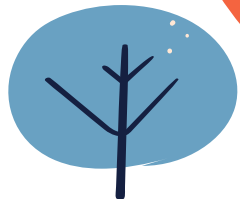
Nurturing	MCYC	Bloomington, Indiana	12/1/2016	"Mentor"		R: Role models	HR, R	O/C
Nurturing	MCYC	Bloomington, Indiana	12/1/2016	"boss"		R: Role models	HR, R	O
Nurturing	MCYC	Bloomington, Indiana	12/1/2016	"praise"		R: Normative	R, L	R
Nurturing	MCYC	Bloomington, Indiana	12/1/2016		Drawing: thumbs up	R: Normative	R	I?
Nurturing	MCYC	Bloomington, Indiana	12/1/2016	"encouragement"		R: Normative	R, L	R
Nurturing	MCYC	Bloomington, Indiana	12/1/2016	"support systems for when you're		R, O: Social support	HR, R, L	O/C
Nurturing	MCYC	Bloomington, Indiana	12/1/2016	"positive friends and family"		R: social support	HR, R, L, OS	R



03

## Presenting the Data

Where do we go from here?







# Social, Family & Organizational Connectedness

## POLICY MAKERS CAN

- support universal paid family leave programs • support diversion programs and alternatives to prison, when appropriate • increase access to

- substance-abuse treatment programs • **EMPLOYERS CAN** • pay living wages • allow employees flexibility to respond to unexpected family needs • provide employees with consistent work schedules so that they can plan for family life and child care. • **ORGANIZATIONS CAN** • adopt inclusive family engagement policies to include grandparents, foster parents and other caregivers • provide community-supported youth programs and extracurricular activities • offer early-intervention parenting programs, parent support groups and parenting education

## POLICY MAKERS CAN

- promote safe, connected neighborhoods by





# Acceptance and Inclusion

## EMPLOYERS CAN •

adopt **inclusive organizational policies, practices and structures** that increase access across a range of cultures, languages and abilities

- engage staff in **implicit bias trainings** •
- recruit and retain an **inclusive workforce** so that youth can see people who are like them serving in a range of roles • **ORGANIZATIONS CAN** •
- conduct developmentally appropriate **empathy education** for youth •
- create **trauma-informed organizations** •
- provide **culturally inclusive programming**



# Support for Personal Growth

## POLICY MAKERS CAN •

invest in **public K-12 schools** and affordable, **post-secondary learning and training opportunities** to ensure great educational opportunities for young people

• adopt **restorative justice practices**

(eliminating zero-tolerance policies) • **EMPLOYERS CAN** • offer **job readiness, shadowing and training opportunities** for youth. • create **opportunities for ongoing learning, training and career development** among employees •

**ORGANIZATIONS CAN** • offer **mentoring programs** • create **volunteer programs** for youth • provide **extracurricular activities** that allow young people to explore their interests, including music and arts • adopt **positive discipline techniques**





The illustration depicts a park setting with a light green ground and a yellow circular area. In the background, there is a green tree. In the foreground, a person in a maroon hoodie and dark pants is carrying a grey stretcher. To their right, a boombox sits on the ground with wavy lines emanating from it. Further right, a person in a red shirt and dark shorts is interacting with a person in a brown shirt and blue pants. The entire scene is framed by a light blue border.

## POLICY MAKERS

- CAN** • promote safe, connected neighborhoods by attending to **infrastructure** (sidewalks and roads) and by developing or improving **mass transit options**
- ensure that their communities provide **safe parks and recreational spaces** • establish **zoning practices** that equitably share community protections and risks.
  - **EMPLOYERS CAN** • partner with local governments to **create community benefit agreements**

**Safe, Non-Violent Communities**

Community

# Stable Basics

## POLICY

**MAKERS CAN** • invest in

**universal health care** that is inclusive

of **mental and physical health** • invest in

**social safety-net programs** that

sustain families through difficult

times, including Temporary

Assistance for Needy Families

(TANF), Supplemental Nutrition

Assistance Program (SNAP), the

Women, Infants and Children

Program (WIC) and childcare

subsidies • increase **housing stability**

by instituting initiatives that **reduce evictions,**

**increase housing options across income**

**levels and protect credit ratings**



ring



Since 2017...

Commission on Social  
Status of Black Men



Indiana Minority  
Health Coalition

Indiana School  
for the Deaf



# Interested in bringing a similar activity to YOUR community?

Reach out to us and we'll get you a physical copy!

contact Colleen Yeakle at [cyeakle@icadvinc.org](mailto:cyeakle@icadvinc.org)



# Thank you!

**Colleen Yeakle**

[cyeakle@icadvinc.org](mailto:cyeakle@icadvinc.org)



**Shay Upadhyay**

[slupadhy@iu.edu](mailto:slupadhy@iu.edu)